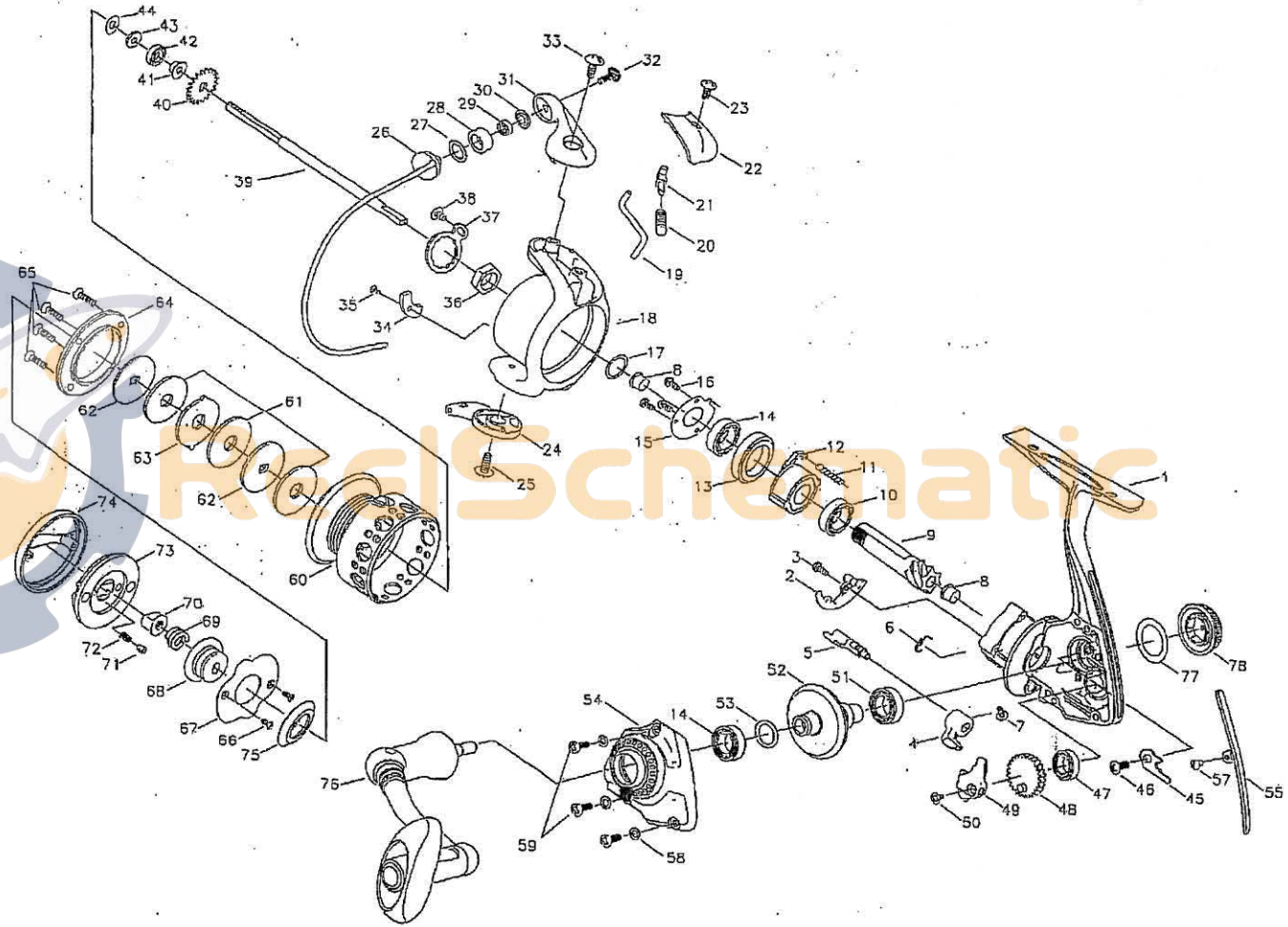


Use this part list for ordering replacement parts for your Pflüeger Spinning Reel. When ordering, please specify which reel you own and the model number printed on the reel body.

PFLUEGER SUPREME 8025MG NEW 2008

- 1 BODY ASSEMBLY
- 2 N-R CAM
- 3 N-R CAM SCREW
- 4 N-R LEVER
- 5 N-R LEVER SHAFT
- 6 N-R LEVER SPRING
- 7 N-R LEVER SCREW
- 8 PINION BUSHING
- 9 PINION
- 10 PINION BALL BEARING
- 11 CLUTCH SPRING
- 12 ONE WAY CLUTCH ASSEMBLY
- 13 BEARING SLEEVE
- 14 BALL BEARING
- 15 BEARING COVER
- 16 BEARING COVER SCREW
- 17 CLUTCH WASHER
- 18 ROTOR
- 19 TRIP PLUNGER
- 20 BAIL ARM SPRING
- 21 BAIL ARM GUIDE
- 22 BAIL ARM COVER
- 23 BAIL ARM COVER SCREW
- 24 BAIL HOLDER
- 25 BAIL HOLDER SCREW
- 26 BAIL WIRE ASSEMBLY
- 27 LINE ROLLER WASHER
- 28 LINE ROLLER
- 29 LINE ROLLER BEARING
- 30 LINE ROLLER SPACER
- 31 BAIL ARM
- 32 LINE ROLLER SCREW
- 33 BAIL ARM SCREW
- 34 COUNTER WEIGHT
- 35 COUNTER WEIGHT SCREW
- 36 ROTOR NUT
- 37 ROTOR NUT WASHER
- 38 ROTOR NUT SCREW
- 39 MAIN SHAFT
- 40 CLICK GEAR
- 41 SLEEVE
- 42 SPOOL BALL BEARING
- 43 MAIN SHAFT WASHER
- 44 SHEET WASHER
- 45 O/S SLIDER PLATE
- 46 PLATE SCREW
- 47 O/S GEAR BEARING
- 48 O/S GEAR
- 49 O/S SLIDER
- 50 O/S SLIDER SCREW
- 51 DRIVE GEAR BEARING
- 52 DRIVE GEAR
- 53 GEAR WASHER
- 54 BODY COVER ASSEMBLY
- 55 REAR COVER
- 56 REAR COVER SCREW
- 57 COVER SCREW WASHER
- 58 COVER SCREW
- 59 SPOOL ASSEMBLY
- 60 DRAG WASHER
- 61 LINING WASHER
- 62 SPOOL WASHER
- 63 SPOOL WING
- 64 SPOOL LIP SCREW
- 65 DRAG KNOB SCREW
- 66 DRAG KNOB WASHER
- 67 DRAG KNOB COVER
- 68 DRAG SPRING
- 69 DRAG NUT
- 70 DRAG CLICK PIN
- 71 DRAG CLICK SPRING
- 72 DRAG KNOB
- 73 DRAG KNOB RING
- 74 DRAG SEAL
- 75 HANDLE ARM ASSEMBLY
- 76 SIDE CAP WASHER
- 77 SIDE CAP ASSEMBLY
- 78



REEL SPECIFICATIONS

Model #	Line Capacity	Gear Ratio	Weight	Class
8025MG	120 Yds/4# Line	5.2:1	6.5 oz.	ULTRALIGHT

Supreme 8025mg